



38/100 Terminus Street LIVERPOOL, NSW

🛏️ 2 🚿 1 🚗 1

UNDER OFFER WITHIN 48HRS!

Situated in the heart of Liverpool, this modernised apartment built in 2001 is perfectly positioned on the top floor offers generous views from two separate balconies overlooking cafes, restaurants and parks, this two bedroom split-level apartment is sure to impress.

Generous bedrooms with mirror built-in wardrobes, a centralised spacious bathroom, this apartment comes fully equipped with large contemporary kitchen with stainless steel appliances and plenty of storage. The living area is decked with timber flooring and the laundry facilities is neatly tucked away.

Currently tenanted until mid-2016! Rental income- \$380 per week.

Contact Agent

Type : Apartment
Sold Date : Friday, 29th May 2015
Land : 87 m2

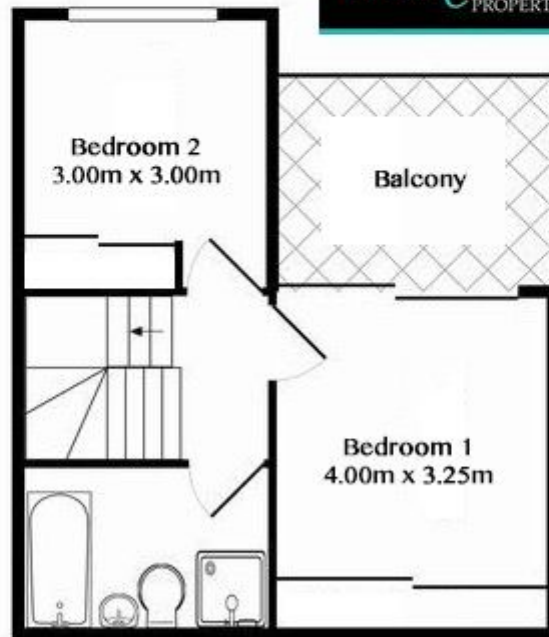
Dale Thomas

0455 021 309



Ground Floor Approx area = 52.1 sqm

TOTAL APPROX FLOOR AREA = 87SQM
Measurements are not to scale.
For illustrative purposes only



First Floor Approx area = 34.9 sqm