



CREMORNE, NSW

🛏️ 2 🛒 1 🚗 3

## Sophisticated easy living

Inspired with an undertone of classic charm, this immaculate property is set on a generous 192sqm and is just minutes to Cremorne Shopping Centre. Immersed in total privacy and flowing over two levels, this generous townhouse really is the epitome of relaxed easy care living.

Recently remodelled with contemporary finishes throughout, the home offers an array of enticing living spaces complete with an abundance of natural light.

### Features

\*Disclaimer: All information contained herewith, including but not limited to the general property description, price and the address, is provided to Thomas Property by third parti

\$1,508,000

**Type** : Townhouse  
**Sold Date** : Saturday, 20th January 2018  
**Land** : 192 m2  
**Building Size** : 160 m2

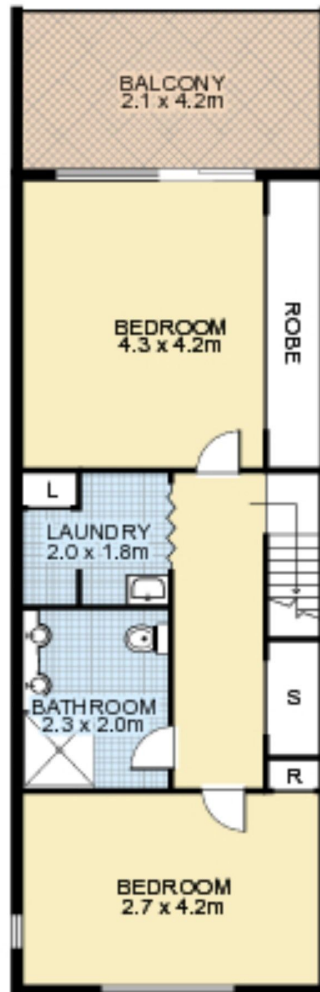
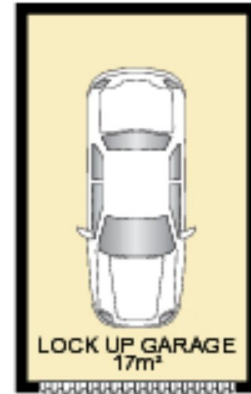
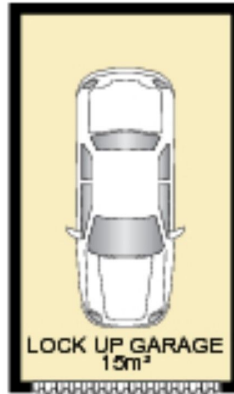
**Jake Felicioni**

0455 448 843

**Evelyn Thomas**

0455 021 341

5/77 GRASMERE ROAD, *Cremorne*



INTERNAL: 160m<sup>2</sup>  
 TOTAL AREA: 192m<sup>2</sup>  
 (Inc Garages, courtyards & balcony)



Scale shown in metres. All dimensions herein are approximate and gathered from sources believed to be reliable. Whilst every effort is made for the accuracy of our floor plans, interested parties should rely on their own enquiries.