



38/100 Terminus Street LIVERPOOL, NSW

🛏️ 2 🚿 1 🚗 1

Tenanted Investment | Split Level Two Bedroom Apartment

Split Level Two Bedroom Apartment - Situated in the heart of Liverpool, this modernised apartment built in 2001 is perfectly positioned on the top floor offers generous views from two separate balconies overlooking cafes, restaurants and parks, this two bedroom split-level apartment is sure to impress.

Generous bedrooms with mirror built-in wardrobes, a centralised spacious bathroom, this apartment comes fully equipped with large contemporary kitchen with stainless steel appliances and plenty of storage. The living area is decked with timber flooring and the laundry facilities is neatly tucked away.

Features:

Please be advised that due to the COVID-19 Pandemic and the strict instructions from the G

For Sale: \$410,000

Type : Apartment
Building Size : 106 m2
Year Built : 2001

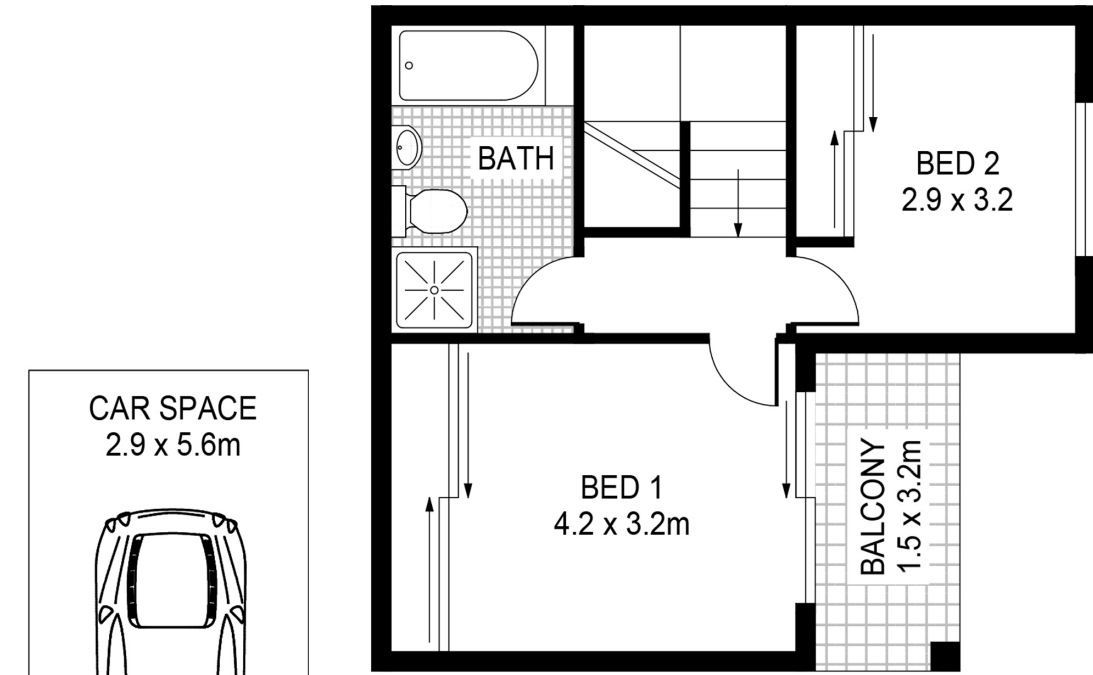
Council Rates : \$317.00 p/q
Water Rates : \$166.82 p/q
Strata Rates : \$600.60 p/q

Jake Felicioni

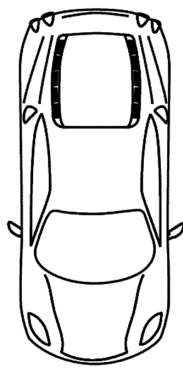
0455 448 843

Dale Thomas

0455 021 309



CAR SPACE
2.9 x 5.6m



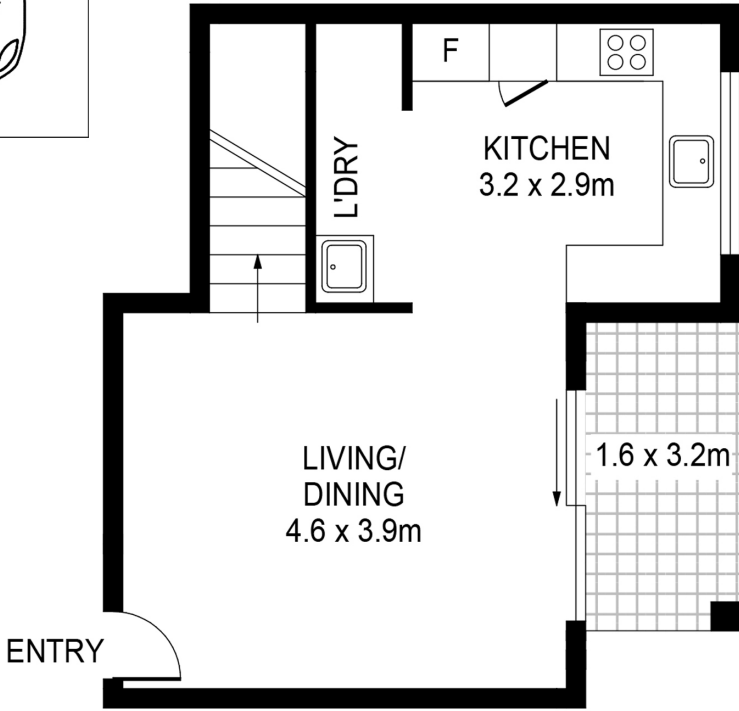
BATH

BED 2
2.9 x 3.2

BED 1
4.2 x 3.2m

BALCONY
1.5 x 3.2m

FIRST FLOOR



ENTRY

LIVING/
DINING
4.6 x 3.9m

KITCHEN
3.2 x 2.9m

L'DRY

1.6 x 3.2m

GROUND FLOOR



38/100 Terminus Street LIVERPOOL



PLANS SHOWN ONLY INDICATIVE OF LAYOUT. DIMENSIONS ARE APPROXIMATE.